



Medway Yacht Club In-River Racing Chart

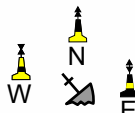
Courtesy of Wilsonian Sailing Club

Home Waters Chart for normal club racing.

*This chart is intended as a guide
to the location of racing marks.*

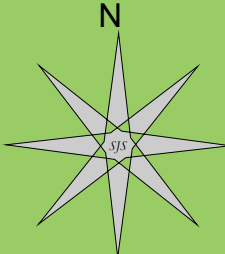
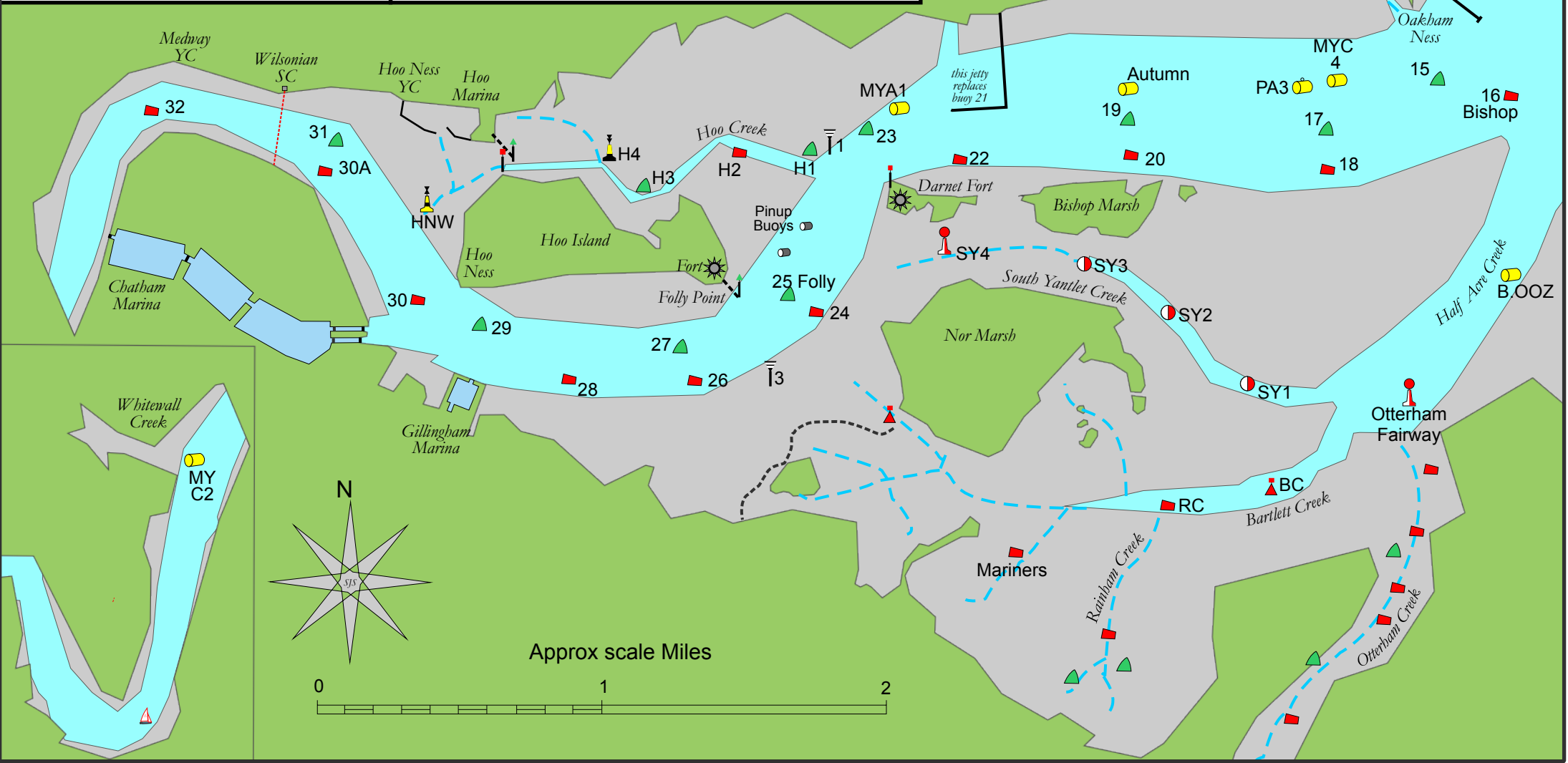
SJS

- Mid Chanel Marks
 - Lateral Marks
 - Isolated Danger Mark
 - Special Marks
(Yellow X optional)
 - Transit Beacons
(Admiralty, most in poor state,
shape of top mark varies)
 - Mooring Buoy
(large commercial)
- Cardinal Marks
 Causeway
(submerged at high water)

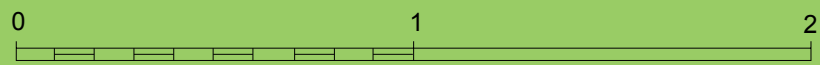


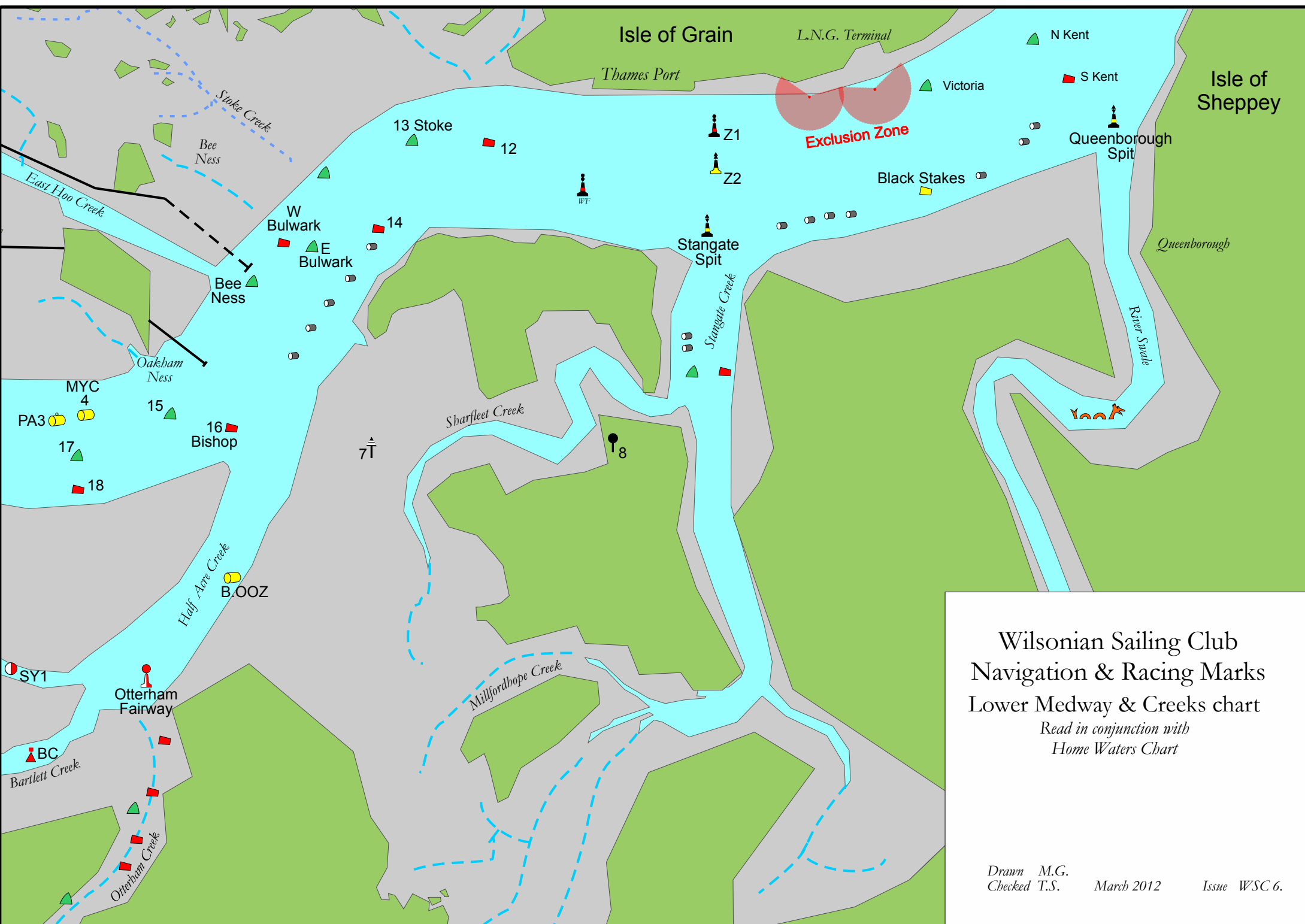
Cardinal Marks

Causeway
(submerged at high water)



Approx scale Miles





Wilsonian Sailing Club
 Navigation & Racing Marks
 Lower Medway & Creeks chart
*Read in conjunction with
 Home Waters Chart*

Drawn M.G.
 Checked T.S. March 2012 Issue WSC 6.

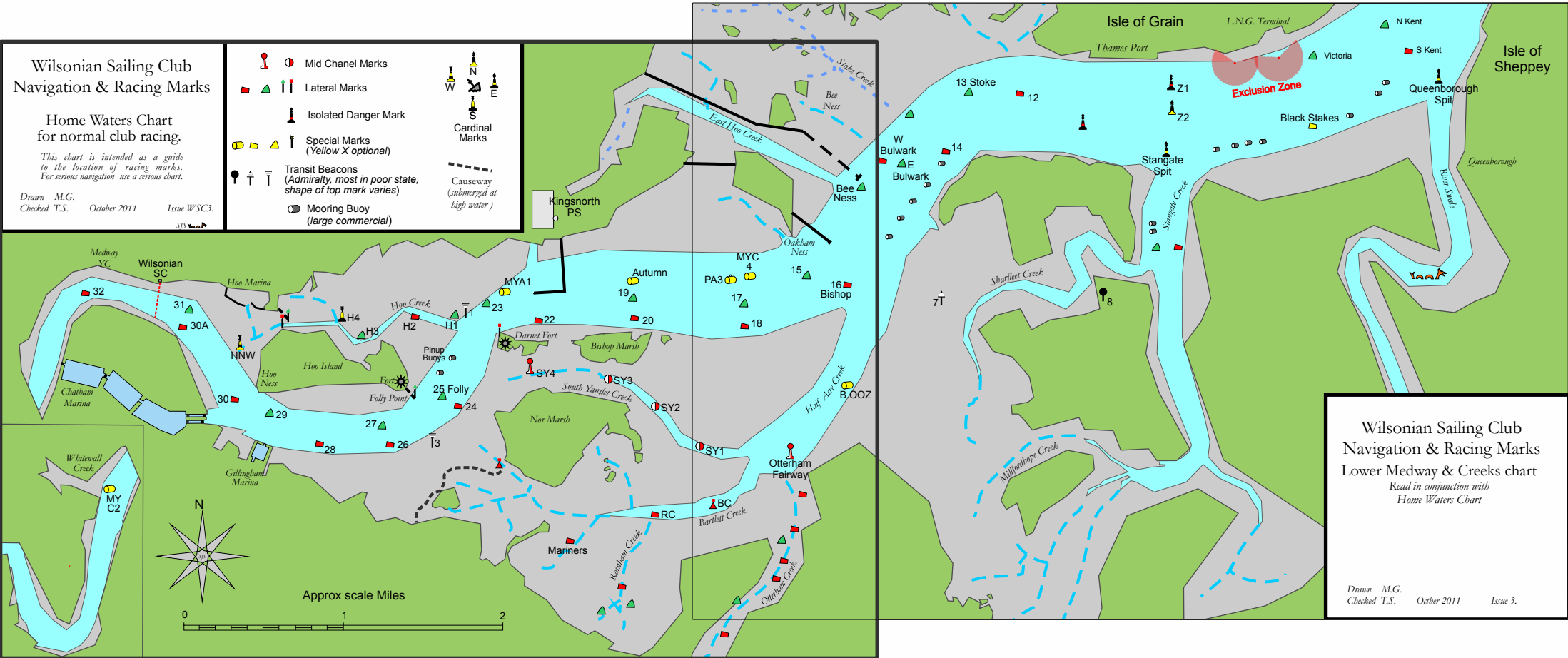
Wilsonian Sailing Club
Navigation & Racing Marks

Home Waters Chart
for normal club racing.

This chart is intended as a guide to the location of racing marks. For serious navigation use a serious chart.

Drawn M.G.
Checked T.S. October 2011 Issue W.S.C.3.
SIS

	Mid Channel Marks		North
	Lateral Marks		East
	Isolated Danger Mark		South
	Special Marks (Yellow X optional)		West
	Transit Beacons (Admiralty, most in poor state, shape of top mark varies)		Causeway (submerged at high water)
	Mooring Buoy (large commercial)		



Wilsonian Sailing Club
Navigation & Racing Marks
Lower Medway & Creeks chart
*Read in conjunction with
Home Waters Chart*

Drawn M.G.
Checked T.S. October 2011 Issue 3.