

Medway Cruiser Racing Course Sheet 2021



Key to MARK Name Abbreviations :

All marks designated by a number only are Medway channel / river navigational buoys.

(P) = pass or round to Port (S) = pass or round to Starboard S.I. = Special Instructions

N. = North E.= East S. = South W.= West SE. = South East Bul.= Bulwark Gr.= Grain Rea.= Reach Q.=Queen . = Shoe.

= Shoebury Stan. = Stangate Sw. = Swatch

Distance From:

MYC	MCC	No	Courses
6.3	3.6	1	30(P) 26(P) 25(P) 23(S) 22(P) MYA1(P) 27(P) 31(P)
7.4	4.7	2	25(P) 23(S) 20(P) 19(P) MYA1(P) 27(P)
8.2	8.2	3	MYC2(P) 32(P) 25(P) 23(S) 20(P) 19(P) MYA1(P) 27(P)
8.3	5.6	4	23(S) 27(P) 26(P) 22(S) 24(S) 30(P) 26(P) 29(S) 25(S) 24(S)
8.5	5.8	5	30(P) 25(P) 23(S) 17(S) 18(S) MYC4(P) 19(P) MYA1(P) 25(S) 27(P)
9.5	6.8	6	25(P) 23(S) 16(S) 18(S) MYC4(P) 19(P) MYA1(P) 25(S) 27(P)
10	7.3	7	30(P) 25(P) 23(S) 16(S) 18(S) 17(S) 15(P) MYC4(P) 19(P) MYA1(P) 25(P) 27(P)
10.3	10.3	8	MYC2(P) 32(P) 25(P) 23(S) 16(S) 18(S) MYC4(P) 19(P) MYA1(P) 25(S) 27(P)
10.5	7.8	9	26(P) 27(S) 23(S) 20(P) MYA1(P) 24(S) MYA1(P) 25(S) 30(P) 26(P) 29(S) 25(S) 24(S)
10.6	7.9	10	25(P) 23(S) 15(P) W.Bul.(S) 16(S) 18(S) MYC4(P) 19(P) MYA1(P) 25(S) 27(P)
10.7	8	11	26(P) 23(S) 24(S) 29(P) 26(P) 23(S) 24(S) 29(S) 30(P) 26(P) 27(P) 29(S) 30(P) 26(P) 27(P) 29(S)
10.7	8	12	27(S) 26(P) 23(S) 20(P) 19(P) 22(S) 24(S) 25(P) 27(S) 29(S) 30(P) 27(S) 29(S) 30(P) 26(P) 29(S)
11.5	8.8	13	30(P) 25(P) 23(S) 15(P) MYC4(P) 19(P) 16(S) 18(S) MYC4(P) 19(P) MYA1(P) 25(P) 27(P)
11.5	8.8	14	25(P) 23(S) 18(P) 19(S) 17(S) 18(P) 16(S) Otterham Fairway(P) 16(P) 19(P) 27(P)
11.6	8.9	15	25(P) 23(S) 15(S) 16(S) 18(S) MYC4(P) 19(P) 27(P)
12.1	9.4	16	25(P) 23(S) 15(P) W.Bul.(S) 16(S) 18(S) 20(S) MYC4(P) 19(P) 27(P)
12.4	9.7	17	23(S) 15(P) W.Bul.(S) 13(S) 14(S) 16(S) 18(S) MYC4(P) 19(P) 27(P)
12.6	9.9	18	25(P) 23(S) 15(P) 13(S) 12(S) 14(S) W.Bul(P) 16(S) 18(S) MYC4(P) 19(P) 27(P)
13.4	10.7	19	26(P) 23(S) 16(P) MYC4(P) 20(P) 16(P) MYC4(P) 20(S) MYA1(P) 26(S) 30(S) 26(P) 25(P) 29(S) 24(P) 25(P)
13.6	10.9	20	23(S) 15(P) W.Bul.(S) 13(S) 12(S) 14(S) 13(S) 12(S) 14(S) W.Bul.(P) 16(S) 19(P) 27(P)
14.4	11.7	21	23(S) 15(P) W.Bul.(S) 13(S) Stan.Spitt(P) 12(P) 14(S) W.Bul.(P) 16(S) 18(S) MYC4(P) 19(P) 27(P)
14.5	11.8	22	25(P) 23(S) 18(P) 19(S) 17(S) 18(P) 16(S) Otterham Fairway(P) 14(S) 12(P) 13(P) 15(S) 19(P) 27(P)
14.7	12	23	15(P) 13(S) 12(S) 16(S) W.Bul.(S) 14(S) 18(S) MYC4(P) 22(P) 20(P) 19(P) MYA1(P)
15.1	12.4	24	25(P) 23(S) 15(P) W.Bul.(S) 16(S) 18(S) 20(S) 15(P) 14(S) 16(S) 18(S) MYC4(P) 19(P) 27(P)
15.6	12.9	25	25(P) 23(S) 15(P) 13(S) 16(S) 18(S) 13(S) 14(S) W.Bul.(P) 16(S) 18(S) MYC4(P) 19(P) 25(S) 27(P)
15.6	12.9	26	23(S) 15(P) W.Bul.(S) 16(S) W.Bul.(S) 13(S) Stan.Spitt(P) 12(P) 14(S) 16(S) 18(S) MYC4(P) 19(P) 27(P)
15.9	13.2	27	23(S) 15(P) W.Bul.(S) 13(S) Stan.Spitt(P) 12(P) 14(S) 16(S) 18(S) MYC4(P) 19(P) 27(P)
16.1	13.4	28	15(P) 13(S) Stan.Spitt(S) 14(S) W.Bul.(P) 16(S) 18(S) MYC4(P) 19(P) 27(P)
16.1	13.4	29	15(P) W.Bul.(S) 16(S) W.Bul.(S) 13(S) Stan.Spitt(P) 12(P) 14(S) 13(S) 14(S) 18(S) MYC4(P) 19(P) 27(P)
16.5	13.8	30	26(P) MYC4(S) 18(S) 24(S) 30(P) 23(S) 16(S) 30(S)
17.2	14.5	31	15(P) 13(S) Stan.Spitt(P) N.Kent(S) S.Kent(S) Stan.Spitt(S) 14(S) W.Bul.(P) 16(S) 19(P) 27(P)
18.5	15.8	32	25(P) 23(S) 18(P) 19(S) 17(S) 16(S) Otterham Fairway(P) 14(P) Otterham Fairway(P) 12(P) 13(P) 15(S) 19(P) 27(P)
18.9	16.2	33	15(P) 13(S) Z2(P) S.Kent(P) N.Kent(S) Qbro.spitt (S) Stan.Spitt(S) 12(P) 14(S) W.Bul.(P) 16(S) 18(S) MYC4(P) 19(P) 27(P)
19.4	16.7	34	12(S) Stan.Spitt(P) Q.Borough Spitt(P) Grain Hard(P) Victoria(P) Q.Borough Spitt(P) South.Kent (P) Stan.Spitt(S) 13(P) 18(S)
19.5	16.8	35	13(S) 12(S) 14(S) 13(S) 12(S) 14(S) W.Bul.(P) 16(S) 19(P) 27(P)
20	17.3	36	Z2 (P) South Kent(P) Gr.Edge(P) Nore Swatch(S) 10(S) South Kent (S) Stan.Spitt(S)
22.5	19.8	37	Z2 (P) South Kent(P) Gr.Edge(P) Nore Swatch(P) MidSw.(P) 9(S) South Kent (S) 14(S) 19(P) 27(P)
22.6	19.9	38	Z2 (P) South Kent(P) N.Kent(S) 7(P) All Montgomery Wreck Buoys(P) Gr.Edge(P) South.Kent (S) Stan.Spitt(S)
22.7	20	39	Z2 (P) South Kent(P) Q.Borough Spitt(P) Gr.Hard(P) Victoria(P) Q.Borough Spitt(P) Gr.Hard(P) South Kent(S) Z2(S) W.Bul.(P) 30(P) 26(P) 29(S) 24(P) 25(P)
24	21.3	40	Z2 (P) South Kent(P) 7(P) Sea Reach 3 Sth(P) NoreSw.(P) Gr.Edge(S) South Kent(S) Z2(S) 14(S) 19(P) 27(P)
24.1	21.4	41	Z2 (P) South Kent(P) Gr.Edge(P) NoreSw.(P) MidSw.(S) SeaRea.4 Sth(S) NoreSw.(P) 9(S) South Kent(S) Z2(S) 14(S) 19(P) 27(P)
24.9	22.2	42	Z2 (P) South Kent(P) Gr.Edge(P) NoreSw.(S) W.Shoe.(S) SeaRea.3 Sth(S) 11(S) South Kent(S) Z2(S) 14(S) 19(P) 27(P)
25.1	22.4	43	Z2 (P) South Kent(P) 11(P) SeaRea.3 Sth(P) W.Shoe.(P) NoreSw.(P) Gr.Edge(S) South Kent(S) Z2(S) 14(S) 19(P) 27(P)
25.3	22.6	44	Z2 (P) South Kent(P) Gr.Edge(P) NoreSw.(P) W.NoreSand(P) 11(S) South Kent(S) Z2(S) 14(S) 19(P) 27(P)
25.3	22.6	45	Z2 (P) South Kent(P) 9(P) SeaRea.3 Sth(P) MidSw.(P) Gr.Edge(S) South Kent(S) Z2(S) 14(S) 19(P) 27(P)

26.5	23.8	46	Z2 (P) South Kent(P)	Gr.Edge(P) MidSw.(S) NoreSw.(P) SeaRea.4 Sth(S) 9(S)	South Kent(S) Z2(S) 14(S) 19(P) 27(P)
26.6	23.9	47	Z2 (P) South Kent(P) 27(P)	Gr.Edge(P) Nore Sw (P) W.NoreSand(S) SeaRea.4 Sth(S) 11(S)	South Kent(S) Z2(S) 14(S) 19(P)
26.6	23.9	48	Z2 (P) South Kent(P)	3(P) SeaRea.3 Sth(P) 5(S) South Kent(S) Z2(S) 14(S) 19(P) 27(P)	
26.8	24.1	49	Z2 (P) South Kent(P)	Gr.Edge(P) SeaRea.4 Sth(S) W.Shoe.(S) 5(S) South Kent(S) Z2(S) 14(S) 19(P) 27(P)	
26.9	24.2	50	Z2 (P) South Kent(P)	Gr.Edge(P) MidSw.(S) W.Shoe.(S) SeaRea.3 Sth(S) 7(S) South Kent(S) Z2(S) 14(S) 19(P) 27(P)	
26.9	24.2	51	Z2 (P) South Kent(P)	5(P) W.Shoe.(P) SeaRea.4 Sth(P) Gr.Edge(S) South Kent(S) Z2(S) 14(S) 19(P) 27(P)	
27.7	25	52	Z2 (P) South Kent(P)	Gr.Edge(P) MidSw.(S) Leigh(S) NoreSw.(S) 11(S) South Kent(S) Z2(S) 14(S) 19(P) 27(P)	
28.2	25.5	53	Z2 (P) South Kent(P)	1(P) W.Shoe.(P) NoreSw.(P) Gr.Edge(S) South Kent(S) Z2(S) 14(S) 19(P) 27(P)	
29	26.3	54	Z2 (P) South Kent(P) 27(P)	Gr.Edge(P) SeaRea.4 Sth(S) W.Shoe.(S) SeaRea.2 Sth(S) 1(S) South Kent(S) Z2(S) 14(S) 19(P)	
29.1	26.4	55	Z2 (P) South Kent(P)	Gr.Edge(P) W.Shoe.(S) 3(S) SeaRea.3 Sth(P) 9(S) South Kent(S) Z2(S) 14(S) 19(P) 27(P)	
30.5	27.8	56	Z2 (P) South Kent(P)	3(P) W.Shoe.(P) 5(S) South Kent(S) Z2(S) 14(S) 19(P) 27(P)	
		57	Special Instructions		

MARKS and Standing Instructions that Apply to ALL COURSES: (see Sailing Instructions, sect. 12).

FOLLY BEACON and DARNET BEACON: Courses shall be sailed leaving Folly Beacon to Port and Darnet Beacon to Starboard sailing down river and Darnet Beacon to Port and Folly Beacon to Starboard sailing up river.

POSTS off SW corner of HOO ISLAND (Mears): No boat shall pass between any of these posts and Hoo Island. The above beacons and posts are considered as marks of all courses and may be used for shortening course.

SEWER OUTFALL BUOY off Garrisons Point : No boat shall pass between this N. cardinal buoy and the Kent shore.

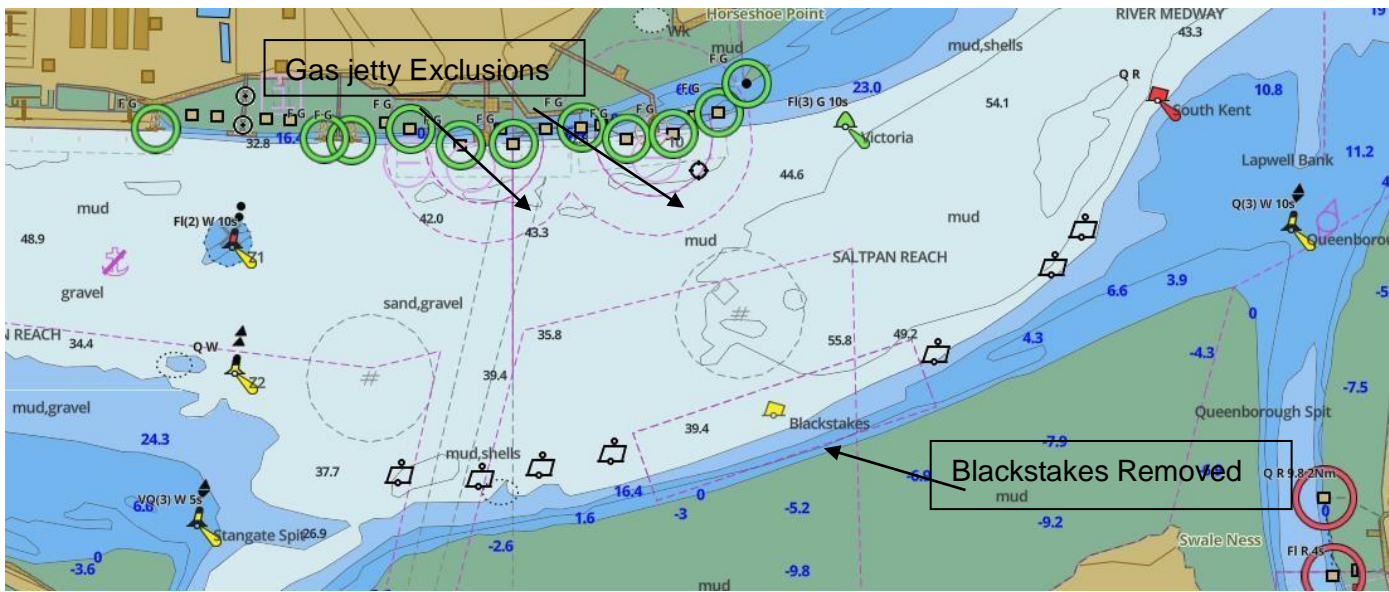
YELLOW GUARD BUOYS : No boat shall cross the transits of guard buoys surrounding any wrecks or working vessels. (eg the Montgomery, or working vessels engaged in dredging, piling, cable laying, etc.), or enter any MPA exclusion zone, **especially the un-marked zone round the new LNG loading terminal at Grain.**

NAVIGATION WARNING : Any MYC sketch plans showing marks should not be used for navigation.

Several marks are positioned in or close to shallow water and care should be taken when navigating in the vicinity of such marks at Low Water, e.g. the following buoys : Medway No.23, Medway No.24, Medway No.16, Stangate Spit, Leigh. And shallows to W of Grain Edge

RACING MARKS : are charted navigation buoys except for the MYA / MYC racing marks, MYA1, MYC2 and MYC4. Autumn.

N.B. Blackstakes (Yellow), position 000 42.8' E 51 25.5' N has been removed



Skippers must comply with rules regarding the LNG terminal.