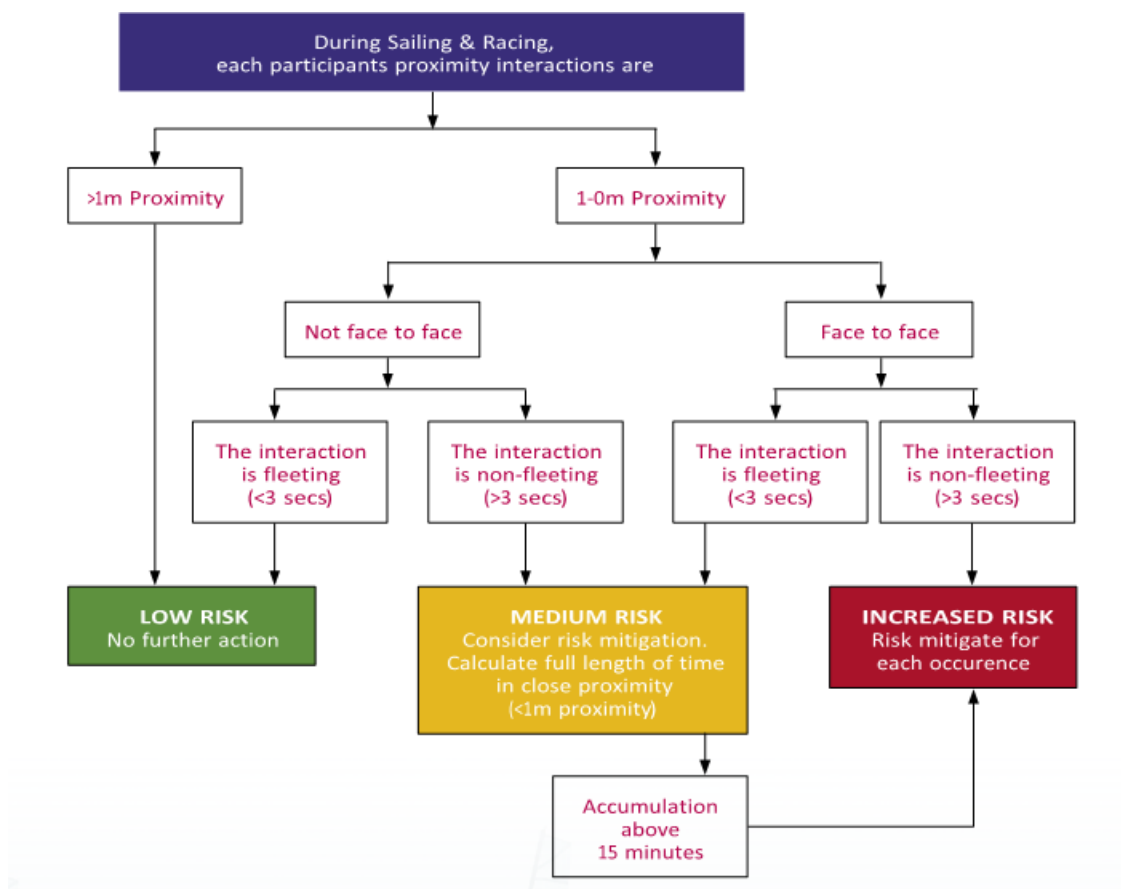


Boat Skippers:

The below is a small table to assess the likelihood of transmission of the disease. For a predetermined short period. It does not consider if any participant is not in a normal health risk category.



If your assessment of your crew interactions fall within the medium or increased risk category, you will need to introduce mitigations to control the risk. Here are some mitigations we advise you to follow:-

No.	Mitigation	Applies To	Conducted By
1	Pre-attendance Symptom Check	All participants	All participants
2	Maintain record of participant contact details for 21 days	All participants will TXT the RO on CC mobile No.	Organising Authority MYC CC via Office.
3	Normal social distancing protocols to be followed onshore	All participants	All participants
4	When sailing, if unable to maintain more than 1m separation then maintain at least 0.5m separation between crew with other non-face to face mitigation, wear a face covering	Competitors	Competitors
5	Organise manoeuvres to maximise social distancing and avoid face to face where this would normally occur	Competitors	Competitors
6	For 2-person winches use with 1 person or wear a face covering	Competitors	Competitors
7	When >1 person below deck, limit duration to less than 5 minutes & regularly clean shared surfaces	Yacht racers	Yacht racers

8	For races of a duration to require sleeping onboard crew should not sleep in communal areas. Separate & dedicated cabins to be available for those from different households (no hot bunking).	Yacht racers NA to Autumn Series.	Organising Authority to impose crew limit via NoR
9	Ensure numbers onboard Committee Boats are limited dependent on size of boat to allow minimum 1m spacing	Race Management team	Organising Authority
10	At end of day or before use by another person clean down equipment	All participants	All participants
11	At end of each race and more frequently where practicable, practice hand hygiene	All participants	All participants

Record Table of Skippers assessment: Boat: Series: AUTUMN Race No:

Port of Departure: MYC, Gillingham Marina, Chatham Marina, Upnor SC.

	Crew Position	Name
1		
2		
3		
4		
5		
6		

Record which members of your crew will require to mitigate their contacts, list the mitigation (1 to 11)

Crew members numbers (from table above)	Reason for mitigation (3 to 11 from Top Table)	Type of mitigation to be used.

Due Diligence.

Before Racing:

On the morning of the race, skippers will txt the race coordinator, that their crew are well and showing no symptoms of Covid TXT Number is:

After Racing:

Skipper will email a completed copy of the 'Record Table of Skippers assessment' to the MYC office, Before the COB Monday.